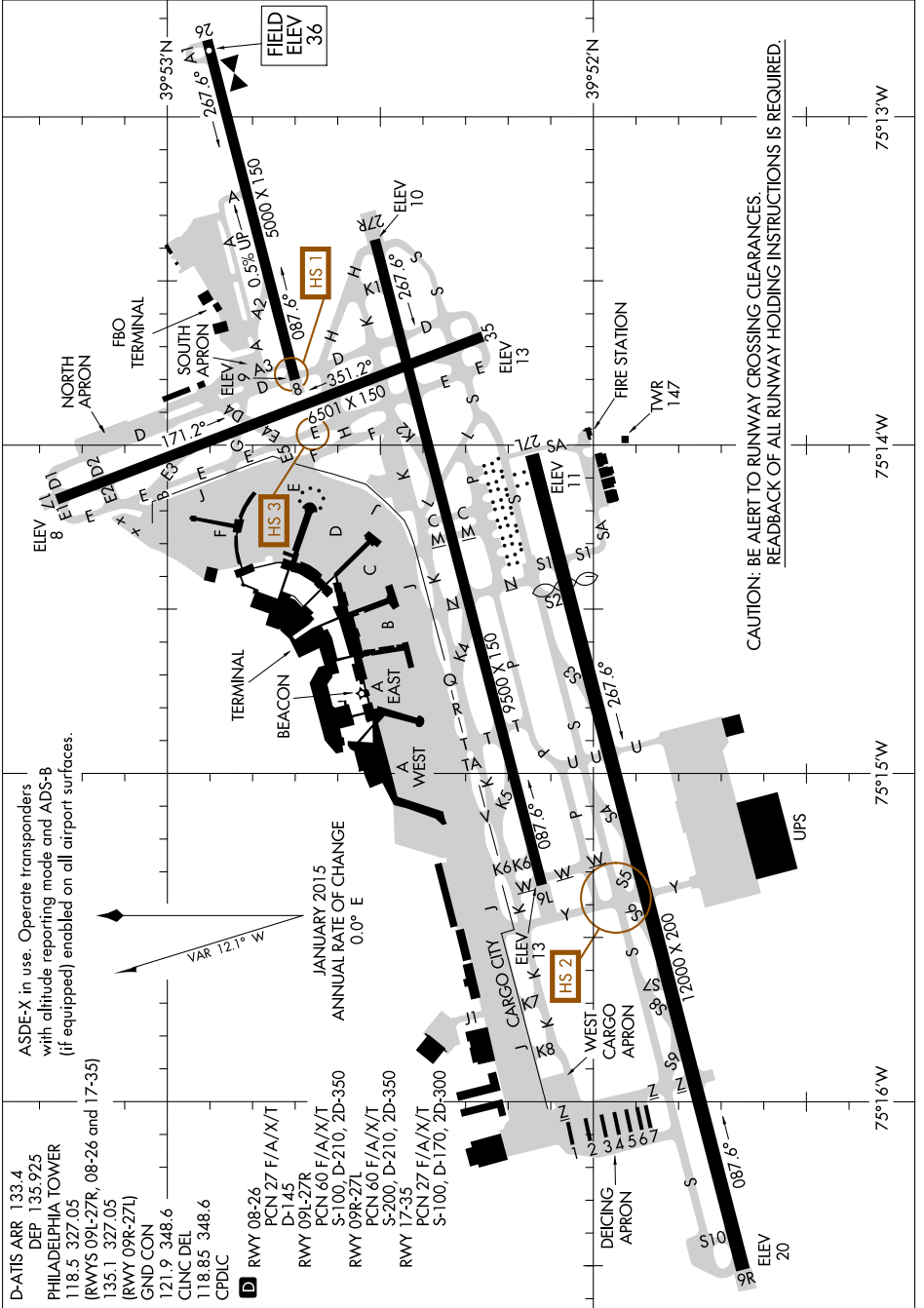


# AIRPORT DIAGRAM

AL-320 (FAA)

PHILADELPHIA INTL (PHL)  
PHILADELPHIA, PENNSYLVANIA

NE-4, 14 SEP 2017 to 12 OCT 2017



CAUTION: BE ALERT TO RUNWAY CROSSING CLEARANCES  
READBACK OF ALL RUNWAY HOLDING INSTRUCTIONS IS REQUIRED.

75°13'W

75°14'W

75°15'W

75°16'W

NE-4, 14 SEP 2017 to 12 OCT 2017

# AIRPORT DIAGRAM

PHILADELPHIA, PENNSYLVANIA  
PHILADELPHIA INTL (PHL)