

17061

# AIRPORT DIAGRAM

## LUBBOCK PRESTON SMITH INTL (LBB)

AL-241 (FAA)

LUBBOCK, TEXAS

ATIS  
125.3  
LUBBOCK TOWER  
120.5 239.3  
GND CON  
121.9 348.6  
CLNC DEL  
125.8 281.55

D

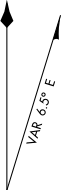
FIELD  
ELEV  
3282

RZ1

173.2°

0.4% DOWN

NOTE: Ramps are uncontrolled. Do not call for push/power back. Advise GND CON when ready to taxi.



JANUARY 2015  
ANNUAL RATE OF CHANGE  
0.1° W

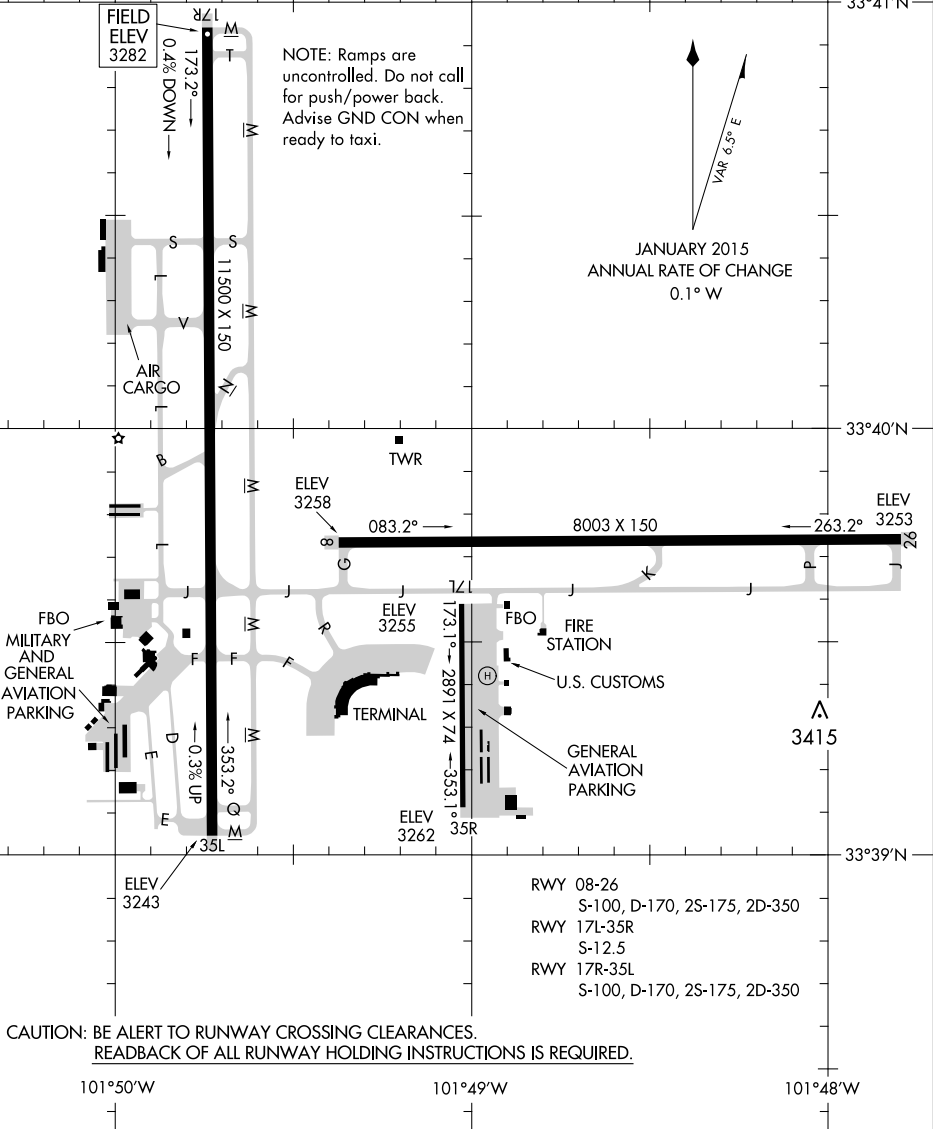
33°41'N

33°40'N

33°39'N

SC-2, 14 SEP 2017 to 12 OCT 2017

SC-2, 14 SEP 2017 to 12 OCT 2017



CAUTION: BE ALERT TO RUNWAY CROSSING CLEARANCES.  
READBACK OF ALL RUNWAY HOLDING INSTRUCTIONS IS REQUIRED.

101°50'W

101°49'W

101°48'W

# AIRPORT DIAGRAM

17061

LUBBOCK, TEXAS  
LUBBOCK PRESTON SMITH INTL (LBB)