

AIRPORT DIAGRAM

D-ATIS
133.675
METRO TOWER
118.4 EAST
135.0 WEST
317.725
CLNC DEL
120.65
CPDLC

RWY 03L-21R
PCN 77 R/A/W/T
S-100, D-185, 2S-175, 2D-350

RWY 03R-21L
PCN 91 R/B/W/T
S-100, D-200, 2S-175, 2D-350, 2D/2D2-750

RWY 04L-22R
PCN 126 R/B/W/T
S-100, D-200, 2S-175, 2D-350, 2D/2D2-750

RWY 04R-22L
PCN 126 R/B/W/T
S-100, D-185, 2S-175, 2D-350

RWY 09L-27R
PCN 73 R/A/W/T
S-100, D-185, 2S-175, 2D-350

RWY 09R-27L
PCN 78 R/A/W/T
S-100, D-185, 2S-175, 2D-350

NORTHWEST
GND CON
121.8

NORTHEAST
GND CON
119.45

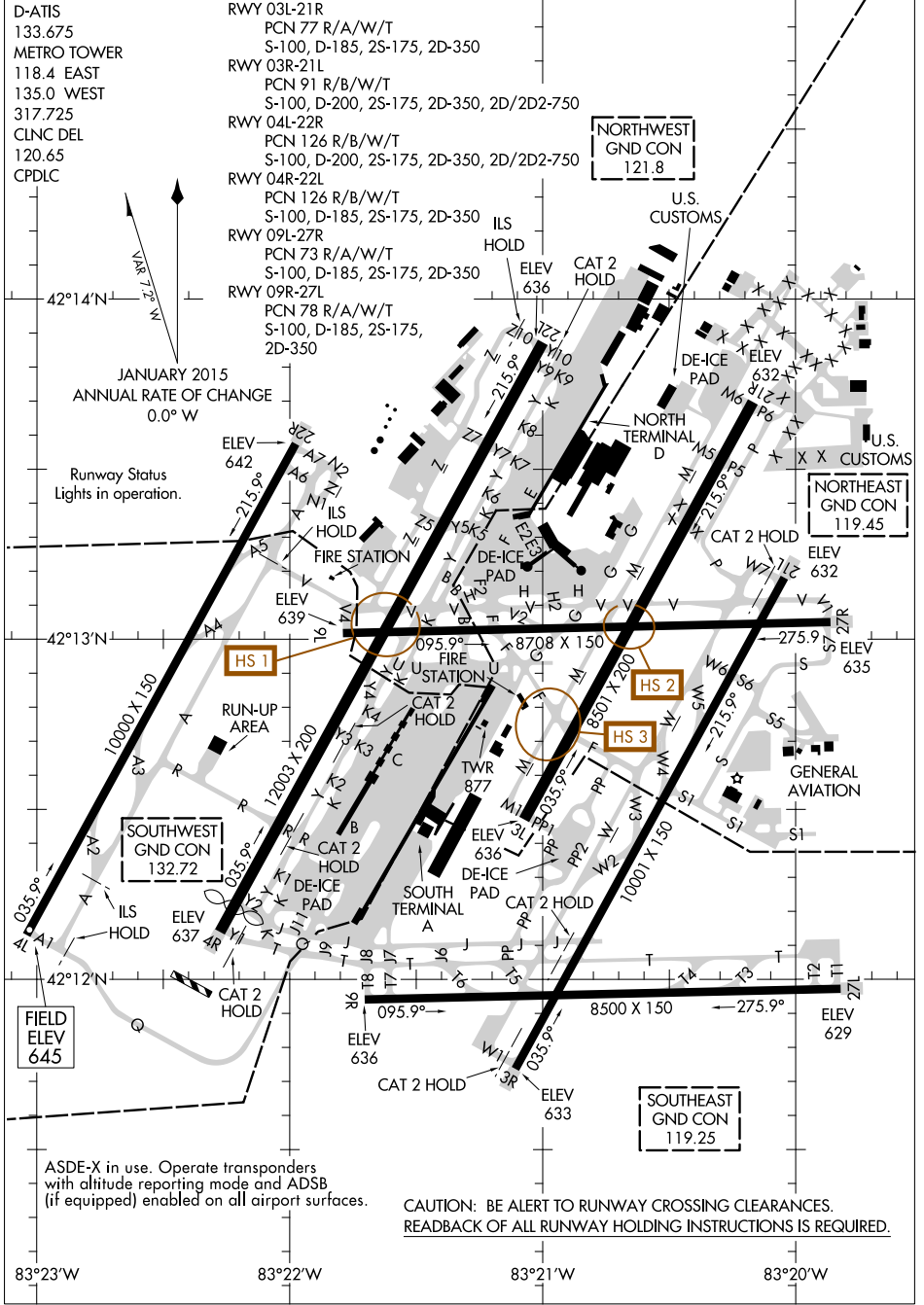
SOUTHWEST
GND CON
132.72

SOUTHEAST
GND CON
119.25

VAR 7.2° W
42°14'N
JANUARY 2015
ANNUAL RATE OF CHANGE
0.0° W
Runway Status
Lights in operation.

EC-1, 14 SEP 2017 to 12 OCT 2017

EC-1, 14 SEP 2017 to 12 OCT 2017



ASDE-X in use. Operate transponders with altitude reporting mode and ADSB (if equipped) enabled on all airport surfaces.

CAUTION: BE ALERT TO RUNWAY CROSSING CLEARANCES.
READBACK OF ALL RUNWAY HOLDING INSTRUCTIONS IS REQUIRED.

AIRPORT DIAGRAM